

# PRODUCT DATA SHEET 10 SERIES

**web:** [https:// stairnosingaustralia.com.au](https://stairnosingaustralia.com.au)

**Contact :** Daphne 0422 803 365

**email:** [daphne@stairnosingaustralia.com.au](mailto:daphne@stairnosingaustralia.com.au)

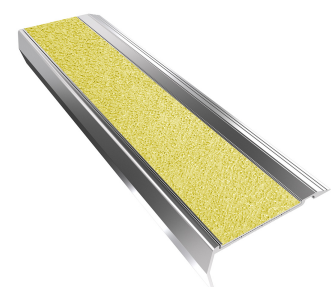
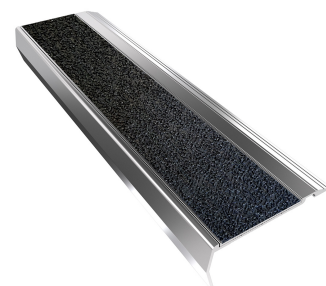
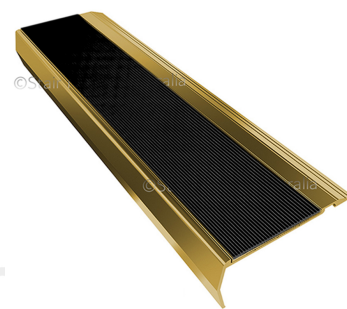
## STAIRNOSING 10 series-stair nosing suitable for all surfaces

This stair nosing is suitable for all hard and soft surfaces. It is installed on ceramics, concrete, porcelain, carpet and terrazzo. It is also often fitted on surfaces that require a larger riser. Steps that may be chipped or cracked require a stair nosing that has a larger riser than 10 mm

This stair nosing is also popular where steps have a rolled edge. The nosing curves and returns to the face of the riser, thus eliminating any part hanging over the edge. Often also used on carpeted surfaces, such as broadloom and carpet tiles.

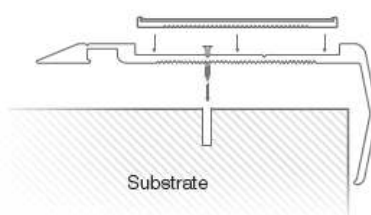
### SPECIFICATIONS

PRODUCT	<b>10 series</b>
BASE MATERIAL	Alloy: 6060, Temper: T5
FINISH	Clear Anodised – 25Um/Anodised Clear, Black or Anodised Sovereign Gold
TREAD WIDTH	85 mm
FRONT DEPTH	35 mm
TREAD THICKNESS	4.8mm
INSERT TYPE	Carborundum - Epoxy - Santoprene serrated rubber- Aluminum ripple trim-
PRODUCT WARRANTY	2 Years (As per Stair Nosing Australia's standard warranty conditions) P4 classification for PVC, aluminum ripple trim and <b>P5 classification (Highest available) for carborundum.</b>
INSERT SLIP RATING	<b>AS1428.1-2021</b>
CODE COMPLIANCE	Check floor finish colour for luminance contrast requirements and LRV [ Light Reflective Values]
FIXING METHOD	Screw fixed/or adhesive
APPLICATION	Surface mounted on hard and soft floor finishes – Concrete, Timber, porcelain, ceramics, terrazzo, carpet, carpet tiles



### TYPICAL INSTALLATION

Screw fixed or use Soudal Hi-Tack Adhesive



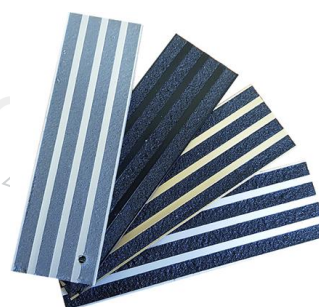
### Inserts for 10 series



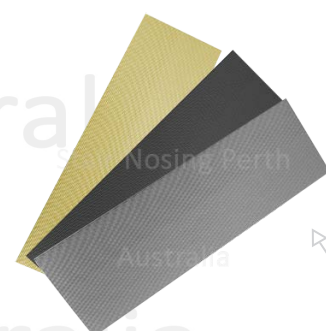
#710 Anodised ripple trim



#410 Carborundum



#110 Epoxy carbide



#310 Serrated Rubber